

BEST OF THE REST

# NEO Series

DSP BASED STAND ALONE SYSTEM  
4 CH/ 8 CH/ 16 CH/ 1640 NEO



# NEO Series 4CH/8CH/16CH/1640Neo

BEST OF THE REST



## HIGHLIGHT FEATURES



**USB**  
Simple back up via a USB port.  
Firmware update, Configuration save & restore by USB.

**E-mail notification**  
E-mails to specific users to notify events such as alarm, motion detection, hard drive failure etc.



**DVD Burner**  
Simple back up via a DVD drive.  
The images can be played back on any PC.

**MPEG-4**  
Watermarked Video, Audio / Time Synchronization.



**Jog/Shuttle Control**  
Convenient 1x – 128x playback speed, reverse & forward playback.

**Mouse & IR Controller Operation**  
All the convenience of an IR Remote & USB Mouse Controller with sophisticated GUI.




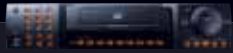
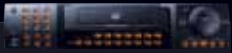
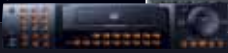
**Networking**  
Full-Function Remote Agent with Admin Functions.

**Panic Recording**  
Overrides all other recording settings to provide the best quality recording

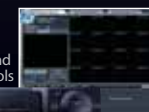


**Web Viewer**  
Built-in webserver.  
No need for software.

## NEO SERIES Specification

| Model No                  | Black 4 Neo  | Black 800 Neo  | Black 1600 Neo  | Black 1640 Neo  |
|---------------------------|---|---|--|--|
| Camera Input              | 4 CH  | 8 CH  | 16 CH  | 16 CH  |
| Looping Output            | 4 CH  | 8 CH  | 16 CH  | 16 CH  |
| Recording Speed           | Max. 100 FPS  | Max. 100 FPS  | Max. 100 FPS   | Max. 400 FPS   |
| Display                   | Real time   | Real time   | Real time  | Real time  |
| Compression Algorithm     | MPEG 4  | MPEG 4  | MPEG 4   | MPEG 4   |
| Recording Resolution      | 704X576, 704X288, 352X288   | 704X576, 704X288, 352X288   | 704X576, 704X288, 352X288  | 704X576, 704X288, 352X288  |
| Image Size                | 6-16Kbyte, 5-10Kbyte, 3-5Kbyte  | 6-16Kbyte, 5-10Kbyte, 3-5Kbyte  | 6-16Kbyte, 5-10Kbyte, 3-5Kbyte   | 6-16Kbyte, 5-10Kbyte, 3-5Kbyte   |
| Recording Mode            | Continuous, Motion, Alarm & Schedule  | Continuous, Motion, Alarm & Schedule  | Continuous, Motion, Alarm & Schedule   | Continuous, Motion, Alarm & Schedule   |
| Pre / post Alarm          | YES   | YES   | YES  | YES  |
| Audio Input               | 2 CH 2way audio communication supported   | 4 CH 2way audio communication supported   | 4CH 2way audio communication supported   | 4CH 2way audio communication supported   |
| Video Output              | 1 BNC & VGA   | 1 BNC & VGA   | 1 BNC & VGA  | 1 BNC & VGA  |
| Alarm                     | 4 input / 1x relay out  | 8 input / 8x digital out (5Vpp)   | 16 input / 16x digital out (5Vpp)  | 16 input / 16x digital out (5Vpp)  |
| Internal Storage Capacity | Up to 4 HDD(3 HDD+1 odd) / Not limited  | Up to 4 HDD(3 HDD+1 odd) / Not limited  | Up to 4 HDD(3 HDD+1 odd) / Not limited   | Up to 4 HDD(Not capacity limited)+1CD/DVD-RW   |
| Spot Monitor Output       | 1ch Analog(BNC)   | 2ch Analog(BNC)   | 4ch Analog(BNC)  | 4ch Analog(BNC)  |
| Network                   | TCP/IP(Dynamic IP Support), DHCP, DDNS  | TCP/IP(Dynamic IP Support), DHCP, DDNS  | TCP/IP(Dynamic IP Support), DHCP, DDNS   | TCP/IP(Dynamic IP Support), DHCP, DDNS   |
| Browser                   | Remote S/W provided, Web Browser  | Remote S/W provided, Web Browser  | Remote S/W provided, Web Browser   | Remote S/W provided, Web Browser   |
| IP Address                | Static or Dynamic IP address support  | Static or Dynamic IP address support  | Static or Dynamic IP address support   | Static or Dynamic IP address support   |
| PTZ Control               | RS 485 ( Local & Remote Control )   | RS 485 ( Local & Remote Control )   | RS 485 ( Local & Remote Control )  | RS 485 ( Local & Remote Control )  |
| Bandwidth Management      | YES   | YES   | YES  | YES  |
| Email Event Notification  | YES   | YES   | YES  | YES  |
| Back up                   | AVI format, USB Device & CD/DVD-RW, Network   | AVI format, USB Device & CD/DVD-RW, Network   | AVI format, USB Device & CD/DVD-RW, Network  | AAVI format, USB Device & CD/DVD-RW, Network   |
| Power Supply              | Internal switching mode power supply  | Internal switching mode power supply  | Internal switching mode power supply   | Internal switching mode power supply   |
| Operation Humidity        | 10-80%  | 10-80%  | 10-80%   | 10-80%   |
| Operation Temperature     | 0-40 degree celsius   | 0-40 degree celsius   | 0-40 degree celsius  | 0-40 degree celsius  |
| Neo Series                | 250G HDD  | 250G HDD  | 250G HDD   | 250G HDD   |
| Standard Components       | Remote Controller<br>USB Mouse  | Remote Controller<br>USB Mouse  | Remote Controller<br>USB Mouse   | Remote Controller<br>USB Mouse   |

Convenient and powerful search tools



\* Specification subject to change without notice.

[www.videoman.com.au](http://www.videoman.com.au)